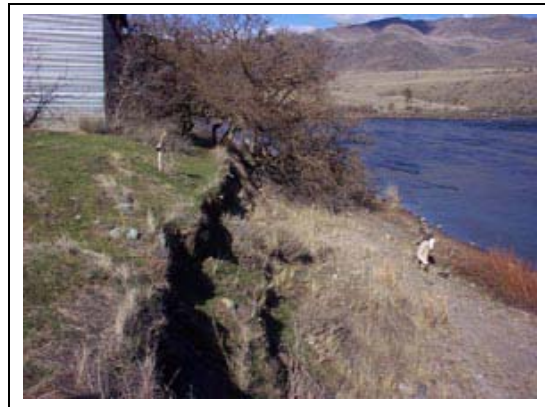


Bank Stabilization Design for the Tin Shed Site Snake River, Hells Canyon

The Tin Shed site is an alluvial terrace located along the Snake River in Hells Canyon National Recreation Area. The Snake River is congressionally designated as a Wild & Scenic River in this area. Archaeological test excavations at the Tin Shed site have indicated extensive prehistoric use of the site. Significant erosion of the riverbank adjacent to the Tin Shed site has occurred. The erosion has caused retreat of the bank line, undermining of riparian trees, and possibly loss of cultural artifacts. Continued bank erosion presents a serious threat to the historic and prehistoric cultural resources of the Tin Shed site.

The Idaho Power Company (IPCo) contracted WEST Consultants, Inc. (WEST) to develop conceptual designs for alternatives to control bank erosion at the Tin Shed site. Specific tasks performed for the contract included the following:



- Data collection and review,
- Review of existing survey data,
- Analysis of hydrologic conditions,
- Characterization of erosion mechanisms,
- Development of alternatives, and
- Hydraulic design of erosion control alternatives.

Alternative bank erosion control methods considered a range of traditional and bioengineering approaches.

Project Owner:

*Idaho Power Company
P.O. Box 70
Boise, Idaho
Contact: Jeff Conner, P.E.
(208) 388-5472*

Completion Date:

December 2002

